

JAMES ISLAND CENTER

1739 Maybank Highway, Charleston, SC 29412



Retail Space Available:

100% Leased

Center Type: Community Center

Retail GLA: 90,993 SF

Year Built: 1975 | Harris Teeter 2015

Features: Signalized Intersection
Dedicated Turn Lane
Pylon Sign

Parking: 295 Surface Spaces

Traffic Counts: 30,700 AADT on Maybank Highway
29,600 AADT on Folly Road

Anchor Tenant:



National/Regional Tenants: PET SUPPLIES PLUS (GREAT PRICES. NO BEGGING.), ANYTIME FITNESS.

Edward Jones (MAKING SENSE OF INVESTING) Great Clips

James Island Center is located at the intersection of Maybank Highway and Folly Road, a prime corner at a high traffic intersection as you enter James Island from West Ashley. There are several entrances to the property for easy access from both Maybank Highway and Folly Road.

Anchor tenants include Harris Teeter and CVS. Other noteworthy tenants include Pet Supplies Plus, Anytime Fitness, Great Clips and Edward Jones.

Demographics	1 Mile	3 Mile	5 Mile
Population 2023	7,496	60,503	127,975
Population 2028	7,997	62,655	134,358
Total Households	3,633	27,531	58,224
Average HH Income	\$117,889	\$115,669	\$109,199



6824 Elm Street, Suite 200, McLean, VA 22101
ph: 703.821.0500 | fax: 703.442.7545 | BeattyCos.com

LEASING CONTACT

NAICharleston

Will Sherrod | 843.364.3796 | wsherrod@naicharleston.com

JAMES ISLAND CENTER

1739 Maybank Highway, Charleston, SC 29412



Space	Tenant
A	Barberitos
B	Ammons Dental By Design
C	CVS Pharmacy
D	Edward Jones
E	GG's on Maybank
F	James Island Physical Therapy
G	Athens Restaurant & Grill
H	Tilted Glass
I	Great Clips
J	Labelle Nail Designers
K	Pho Saigon
L	Club Pilates
M	Beech
N	Pet Supplies Plus
O/P	Harris Teeter
Q	Anytime Fitness
R	Basecamp
T	European Wax Center
U	Maple Street Biscuit
V	My Father's Moustache
W	Muddy Waters



6824 Elm Street, Suite 200, McLean, VA 22101
 ph: 703.821.0500 | fax: 703.442.7545 | BeattyCos.com

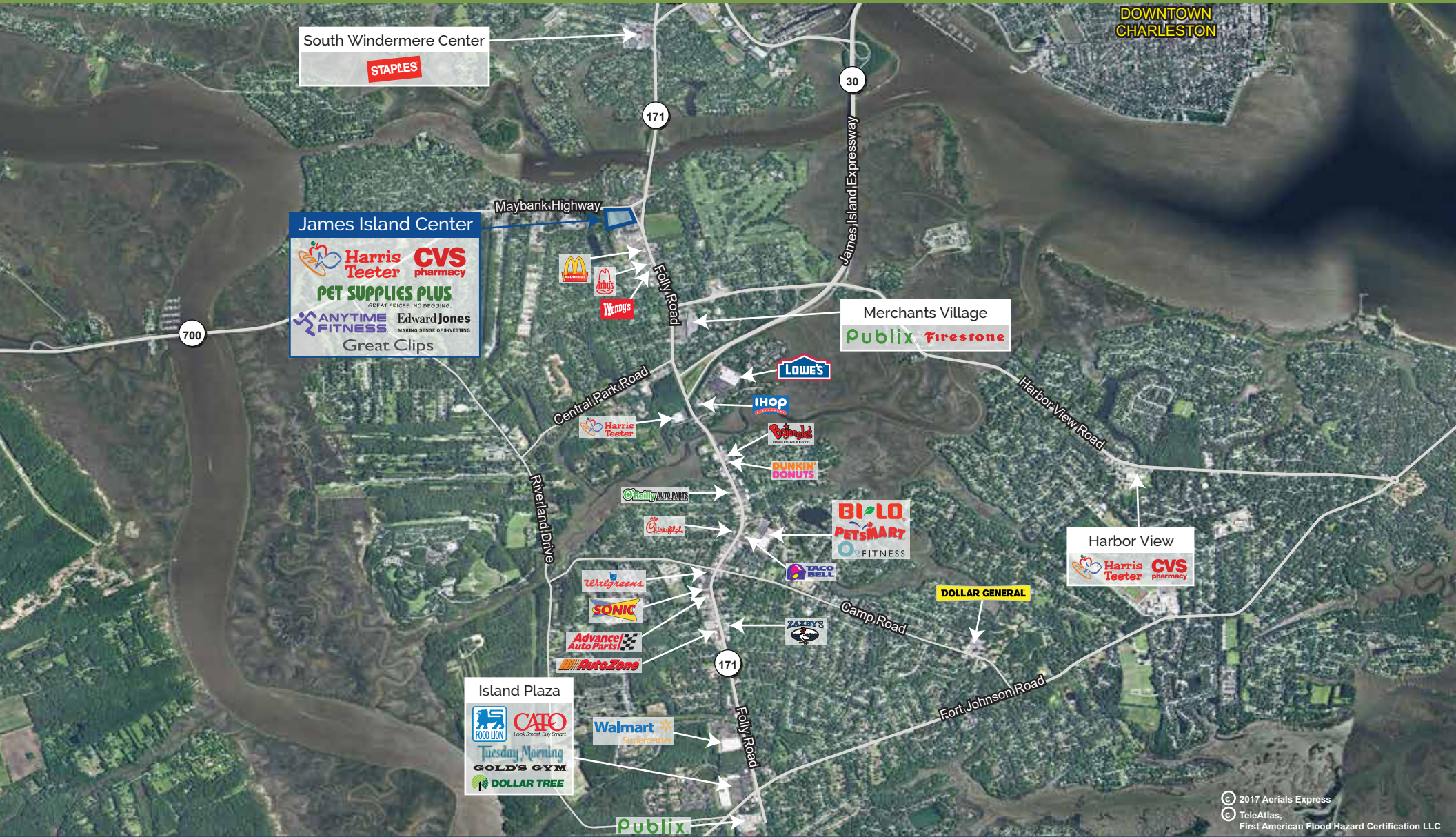
LEASING CONTACT



Will Sherrod | 843.364.3796 | wsherrod@naicharleston.com

JAMES ISLAND CENTER

1739 Maybank Highway, Charleston, SC 29412



© 2017 Aerials Express
 © TeleAtlas,
 First American Flood Hazard Certification LLC



6824 Elm Street, Suite 200, McLean, VA 22101
 ph: 703.821.0500 | fax: 703.442.7545 | BeattyCos.com

LEASING CONTACT

NAI Charleston

Will Sherrod | 843.364.3796 | wsherrod@naicharleston.com